

HEALTH, SAFETY, CLIMATE AND ENVIRONMENT TRAINING PROGRAMME

Significantly Improve Your Business Performance

Benefits for you, the employer

Employees are the heart of every business and their performance has a direct impact on productivity and profitability. For this very reason the National Skills Academy for Manufacturing (the Skills Academy) and EEF, the manufacturers' organisation, have joined forces to improve the skills of UK manufacturers. This strategic alliance sees EEF being approved as the first Health, Safety, Climate and Environment provider in the UK for the Skills Academy to improve the skills base of UK manufacturers.

Training

Whether you need help to implement new legislation or to build your professional health and safety skills – EEF deliver.

Open Courses

From centres nationwide EEF offer health and safety courses that are accredited by The National Examining Board in Occupational Safety and Health (NEBOSH) and The Institution of Occupational Safety & Health (IOSH).

Bespoke Programmes

Through its national network EEF deliver in-house and bespoke training programmes for any level of business, shop floor to boardroom. Drawing on a national pool of trainers, coaches and mentors, EEF match delivery to the industry, along with operational challenges and working styles.

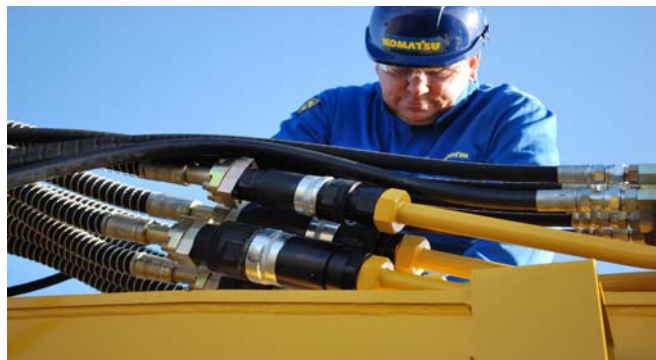
Legislation Response

Because EEF are closely involved in health and safety policy EEF can help businesses to interpret and implement the legislation. As new rules and regulations are introduced, EEF deliver the training needed to implement the changes.

Case Study

Komatsu UK Ltd, manufacturer of construction products, was seeking to enhance the health and safety skills of more than 200 employees at all levels, over half the workforce at its Newcastle site. Working closely with the company, EEF devised a three-month in-house programme leading to IOSH accreditation.

"The value of health and safety is often understated, we trust EEF to align their training and support to help us achieve our corporate objectives. Their approach is to deliver with continuous improvement in mind, something we, Komatsu, are committed to" said Tracey Wilson, HR Manager at Komatsu.



"By establishing this partnership with EEF, the Skills Academy have realised our needs to identify an industry based, ethical, provider who offer best practice Health, Safety, Climate and Environmental services, which focus on business outcomes."

Bill Twigg, Technical Director, Sema

Fact file:

The Health & Safety Executive estimate that over **30 million** working days are lost due to workplace accidents, with the total cost of work accidents and work related ill-health, to society as a whole, likely to be between **£10-15 billion** pounds a year!

Health, Safety, Climate and Environment

Public Scheduled Training

EEF deliver public scheduled courses to cover all aspects of health, safety, climate and environment needs. Click on the web-links below to view examples

EEF HSCE Training – Main Menu
NEBOSH National Diploma
NEBOSH National General Certificate
IOSH Managing Safely
IOSH Working Safely
IEMA Approved Associate Certificate



Team Head
Dr John Herbert
BSc (Eng), PhD, PG
Dip H&S, CFIOSH,
CEnv, MIOd

National Health &
Safety Leader/
North East Health,
Safety, Climate &
Environment
Leader

“EEF helps manufacturing businesses evolve and compete. We provide business services that make them more efficient and management intelligence that helps them plan. Finally, our work with government encourages policies that make it easy for them to innovate and grow.

Our HSCE services are delivered by an unparalleled team of experts including 150 health, safety and environment advisors, 20 occupational health specialists and around 200 trainers, based in our regional offices and in centres of excellence nationally.

Our business services are focused on delivering commercial benefit to you; driving cost out of your operations and quality, productivity and innovation in. We're confident of our ability to deliver value, because each service is informed by our extensive knowledge of manufacturing operations and our insider knowledge of legislation.”

Case Study



EEF designed and delivered an innovative training solution to embed best practice within Caterpillar's Peterlee site.

A leading manufacturer of construction and mining equipment, diesel and natural gas engines and industrial gas turbines Caterpillar employ over 10,000 people in the UK. With internationally high standards for quality and best practice the company sought to embed safe working practices within their shop-floor workforce.

The training programme saw 300 of Caterpillar's production workforce at the Peterlee site trained in the safe handling of abrasive wheels. In addition, EEF trained team leaders to deliver the training of abrasive wheels and lifting and slinging as part of their induction process, ensuring all new staff are skilled in the safe handling of abrasive wheels and slinging/lifting equipment.

EEF structured the training around shift patterns, delivering the training on-site during conventional hours and during evening and night shifts, drastically reducing the training time it took to up-skill the teams.

How are the learners supported?

EEF deliver “real world” training which means that trainers divide their time between delivering training courses and delivering HSCE consultancy to clients to ensure that continuous improvement is maintained and business objectives are achieved.



The Skills Academy's unique Learning Engine integrates the five critical phases of the Learning Engine cycle. Analysis, preparation, delivery, follow-through and evaluation. This facilitates a fully-integrated, systematic approach to work-based learning, customises learning, maximises economic benefit and encourages continued learning.

eeef The manufacturers' Direct EEF Ltd Contact: Greg Ward
organisation T 0191 4165656 M gward@eef.org.uk

The next step contact: The National Skills Academy for Manufacturing, 2410 Regents Court, The Crescent, Birmingham Business Park, Birmingham, B37 7YE

T 0121 329 1970 F 0121 717 6699 E enquiries@nsa-m.co.uk W www.nsa-m.co.uk